



PUMP MEASURE CONTROL
Fuel Dispensing and Metering Solutions

Meter Stand Fuel Dispenser

The MSH series meter stands are designed to provide low cost, high speed fueling. Two configurations are offered at nominal flow rates of 35 GPM and 60 GPM. Actual flow rates may vary depending upon pump size and installation conditions. The meter stand's 8 1/2" square column is fabricated from 12 gauge steel while the 14" square base is 7 gauge steel. Meter stands are powder coated in OSHA safety green as standard.

The meter fitted to each model is a rotary, positive displacement, high accuracy Liquid Controls model M5 with nominal operating range of 5 to 60 GPM. The standard assembly is fitted with a register that has a 5 digit resettable counter and a 7 digit non-resettable totalizer reading in 10th gallons. Other increments of measurement are available include liters and whole gallons. Conventional accessories including a ticket printer and 10:1 or 100:1 pulser are available as options. Inlet filter assemblies and counterweight hose hanging devices are available as well.

The MSH series meter stands are each fitted with a nozzle boot designed to accommodate either a 1" high speed nozzle (7H style) or a 1 1/2" high speed nozzle (1290 style). The MSH-32 & MSH-34 series meter stands have 1" internal piping including a 1" solenoid and a 1" outlet hose connection. The MSH-34 series adds a fuel block on the discharge side of the meter for use in piping to a satellite hose stand. The MSH-62 & MSH-64 series meter stands have 1 1/2" internal piping including a 1 1/2" solenoid and 1 1/2" outlet hose connection. The MSH-64 series adds a fuel block on the discharge side of the meter for use in piping to a satellite hose stand. Both the 1" and 1 1/2" solenoid valves are rated for continuous service and come standard with Buna 'N' trim for diesel service. Gasoline, diesels with certain additives, and other specialty fuels require the optional Viton trimmed valve. The internal 20 amp DPDT on / off switch controls the 1 1/2" internal solenoid valve and can be used to control an isolation valve, pump motor starter, or other process control device.



- ◆ Up to 60 GPM flow rate
- ◆ Designed for the commercial environment
- ◆ Heavy duty construction
- ◆ Meter meets resale accuracy requirements and provides accurate measurement at lower flow rates
- ◆ Integral internally mounted solenoid valve
- ◆ Optional piping for satellite
- ◆ Optional Interlock - Forced Reset
- ◆ Optional pulse output
- ◆ Optional ticket printer



www.pmc-ga.com

Meter Stand Fuel Dispenser

SPECIFICATIONS

MODELS

- MSH-32BA – Meter Stand with register, 1" valve, and 1" hose connection.
- MSH-32BE – Meter Stand with register/printer, 1" valve, and 1" hose connection.
- MSH-34BA – Meter Stand with register, 1" valve, satellite feed, and 1" hose connection.
- MSH-34BE – Meter Stand with register/printer, 1" valve, satellite feed, and 1" hose connection.
- MSH-62BA – Meter Stand with register, 1-1/2" valve, and 1-1/2" hose connection.
- MSH-62BE – Meter Stand with register/printer, 1-1/2" valve, and 1-1/2" hose connection.
- MSH-64BA – Meter Stand with register, 1-1/2" valve, satellite feed, and 1-1/2" hose connection.
- MSH-64BE – Meter Stand with register/printer, 1-1/2" valve, satellite feed, and 1-1/2" hose connection.

PERFORMANCE

- MSH-32 & MSH-34 series – 35 GPM
- MSH-62 & MSH-64 series – 60 GPM
- Actual delivery rates will vary, depending upon the installation conditions, product dispensed and the size of the submersible pump.

CONSTRUCTION

- Pedestal: 12 Gauge powder coated steel OSHA safety green.
- Base: 7 Gauge powder coated steel OSHA safety green.

METER

- 1-1/2" Liquid Controls high flow, rotary motion, positive displacement meter.

SOLENOID

- MSH-32 & MSH-34 series - 1" normally closed.
- MSH-62 & MSH-64 series - 1-1/2" normally closed.

AVAILABLE OPTIONS:

- P10 - Veeder-Root 10:1 pulser on register
- P10 0 - Veeder-Root 100:1 pulser on register
- Interlock - Veeder-Root Interlock switch kit for register

SUPPLY CONNECTION

- 1-1/2" NPT.

OUTLET CONNECTION

- MSH-32 & MSH-34 series - 1" FNPT.
- MSH-62 & MSH-64 series - 1-1/2" FNPT.

MAXIMUM WORKING PRESSURE

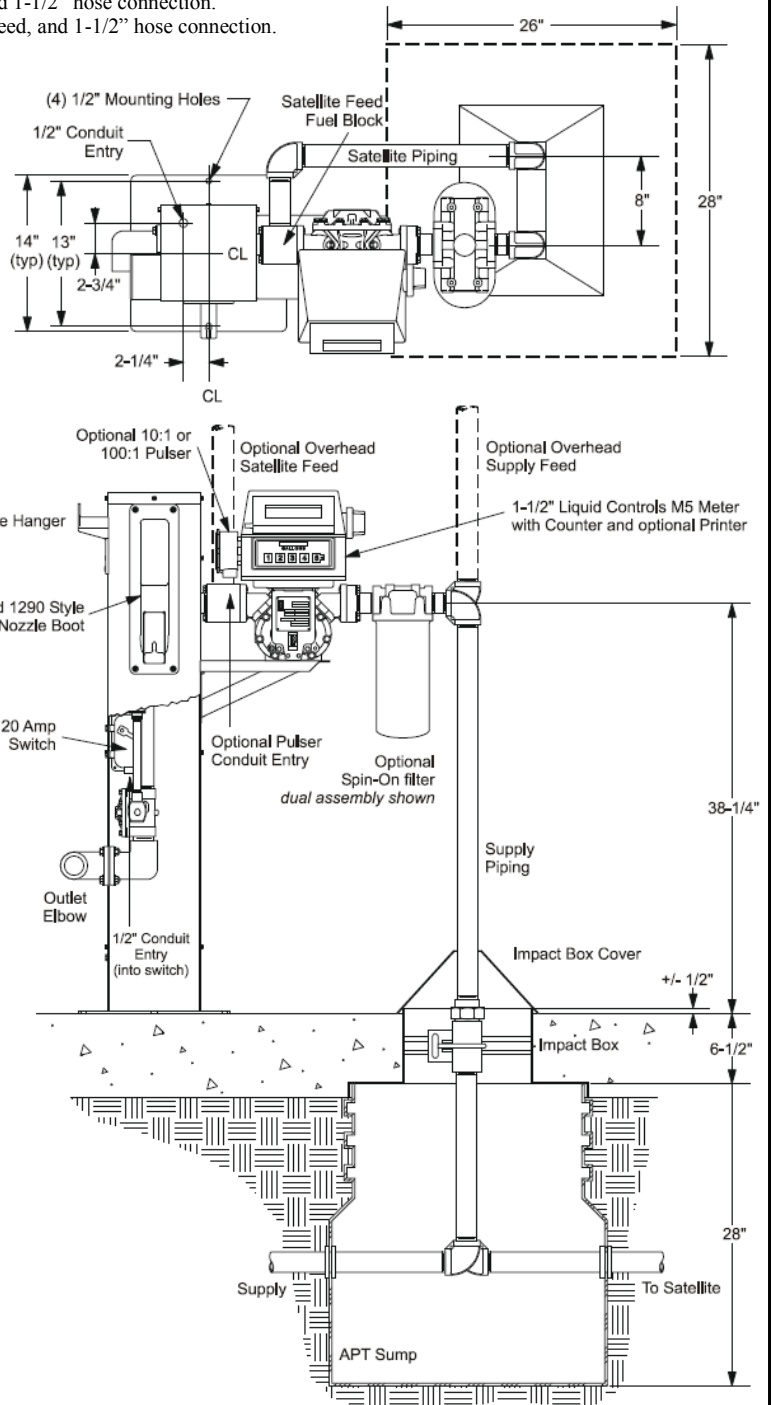
- 50 PSI.

VOLTAGE AND FREQUENCY

- 115VAC 60 Hz, 240VAC 50 Hz optional.

NOZZLE COMPATABILITY

- 11A Style, 7H Style, and 1290 Style through 1-1/2". Contact factory for other types.



Typical Meter Stand Installation
Model with satellite feed shown

